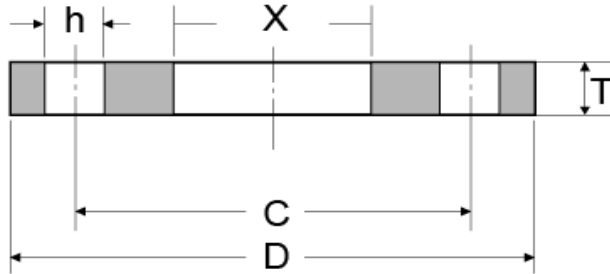


EN1092-1 PN6 Plate Flanges Type 01



Rated Diameter	Pipe	Flange				Screws Parameter			Approx Weight per Piece KG
		ID	Dia of Bolt Circle	O.D.	Thk. of Flange	Dia of Bolt Holes	Thread	Number of Bolt Holes	
		X	C	D	T	h		n	
15	21,3	22,0	55	80	12	11	M10	4	0,401
20	26,9	27,5	65	90	14	11	M10	4	0,590
25	33,7	34,5	75	100	14	11	M10	4	0,716
32	42,4	43,5	90	120	16	14	M12	4	1,153
40	48,3	49,5	100	130	16	14	M12	4	1,344
50	60,3	61,5	110	140	16	14	M12	4	1,478
65	76,1	77,5	130	160	16	14	M12	4	1,850
80	88,9	90,5	150	190	18	18	M16	4	2,944
100	114,3	116,0	170	210	18	18	M16	4	3,247
125	139,7	141,5	200	240	20	18	M16	8	4,301
150	168,3	170,5	225	265	20	18	M16	8	4,741
200	219,1	221,5	280	320	22	18	M16	8	6,862
250	273,0	276,5	335	375	24	18	M16	12	8,893
300	323,9	327,5	395	440	24	22	M20	12	11,880
350	355,6	359,5	445	490	26	22	M20	12	16,788
400	406,4	411,0	495	540	28	22	M20	16	19,781
450	457,0	462,0	550	595	30	22	M20	16	24,495
500	508,0	513,5	600	645	30	22	M20	20	26,307
600	610,0	616,5	705	755	32	26	M24	20	34,702
700	711,0	714,2	810	860	40	26	M24	24	52,441
800	813,0	815,8	920	975	44	30	M27	24	71,262
900	914,0	917,4	1020	1075	48	30	M27	24	86,269
1000	1016,0	1019,0	1120	1175	52	30	M27	28	101,340
1200	1220,0	1224,0	1340	1405	60	33	M30	32	162,638
1400	1420,0	1424,0	1560	1630	72	36	M33	36	257,772
1600	1620,0	1624,0	1760	1830	80	36	M33	40	324,382
1800	1820,0	1826,0	1970	2045	88	39	M36	44	422,35
2000	2020,0	2026,0	2180	2265	96	42	M39	48	555,18